



Using data to re-engineer education for skills and employability

25 Sep 2018

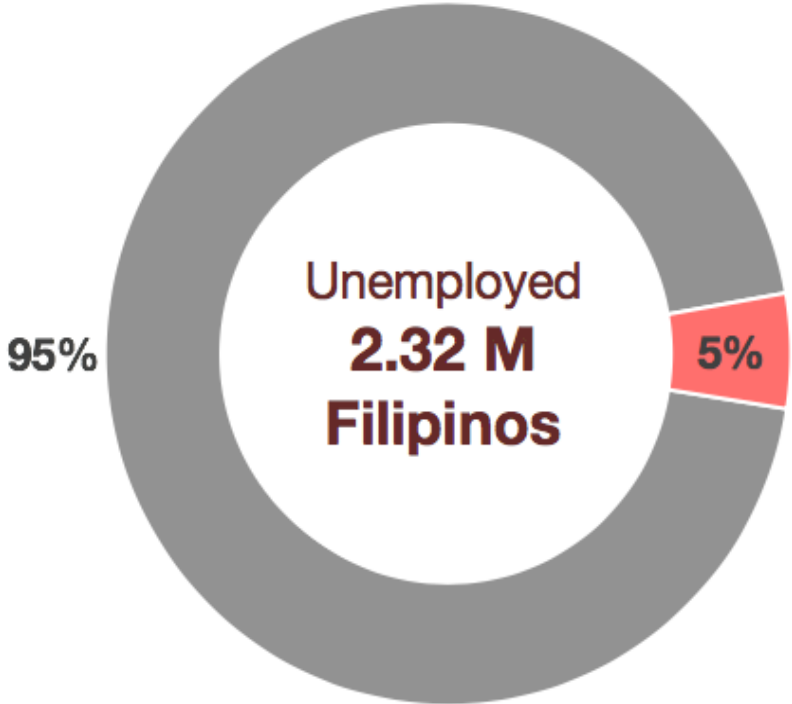


The Problem

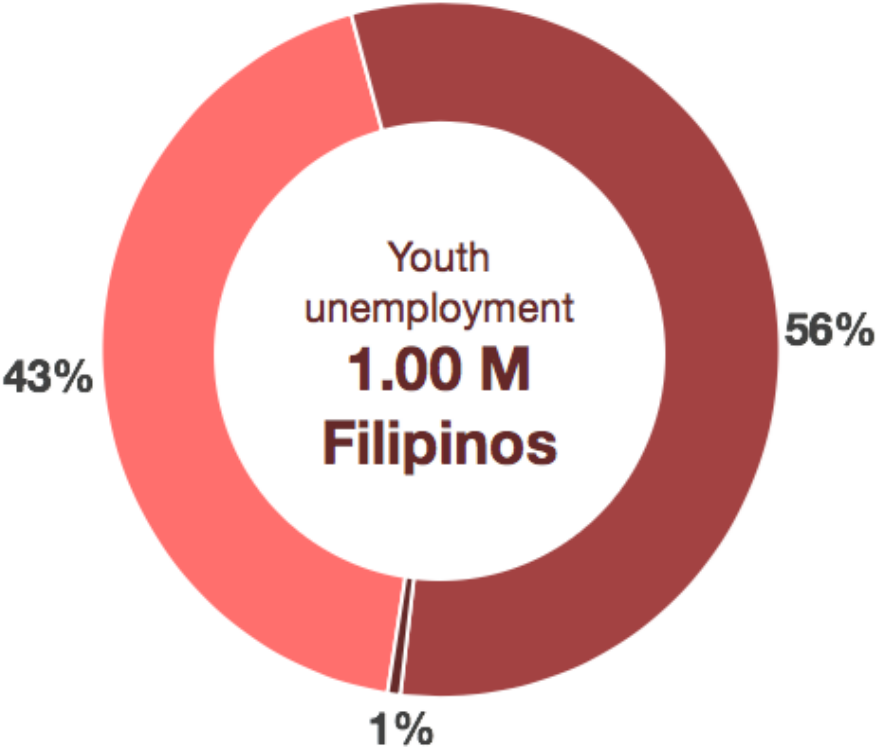
Many **students** are *not learning*,
and **graduates** are *not
employed*.

Half of our unemployed are the youth

PH unemployment, Jan. 2018 by age group



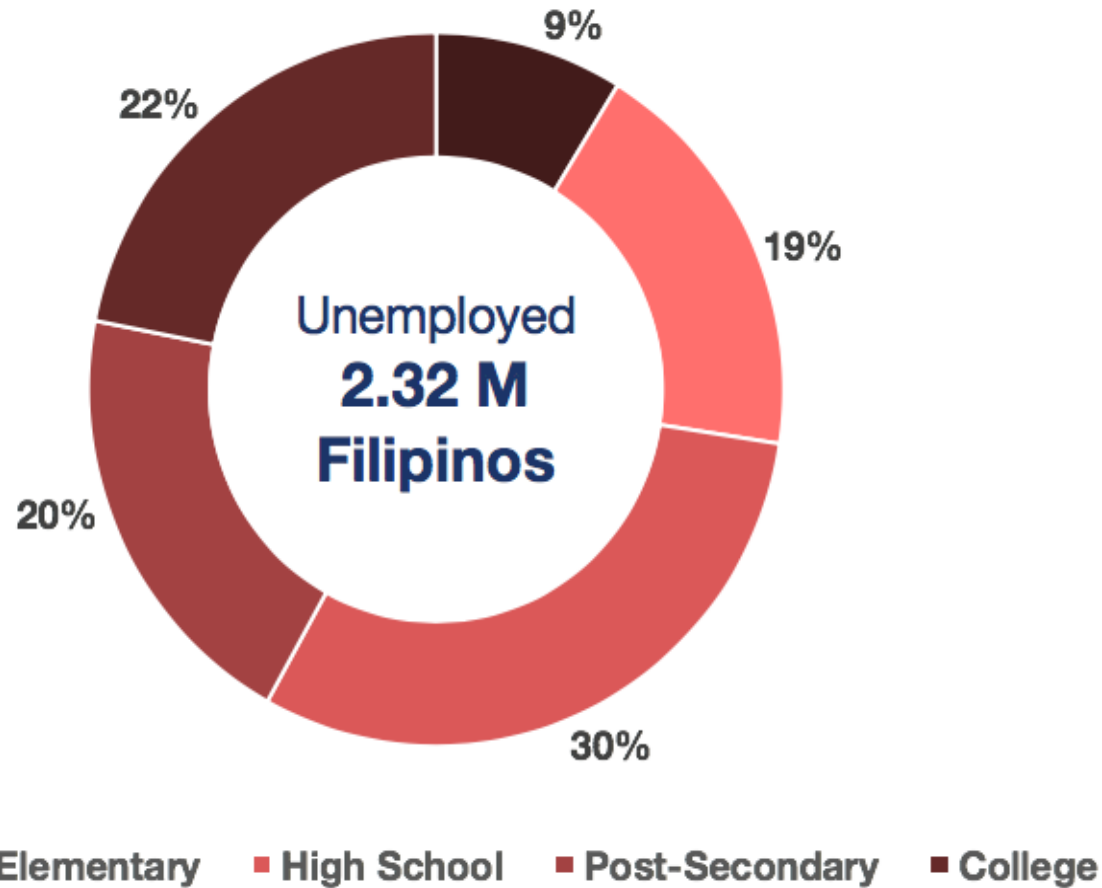
■ Employed ■ Unemployed



■ 15-24 ■ 24 to 64 ■ 65 and over

Many of them with college degrees

PH unemployment, Jan. 2018 by educational attainment



For every 5
unemployed Filipinos
3 have a high school diploma,
and 1 a college degree

**We've made great strides to
try to address these challenges**

By institutionalizing various key reforms and efforts

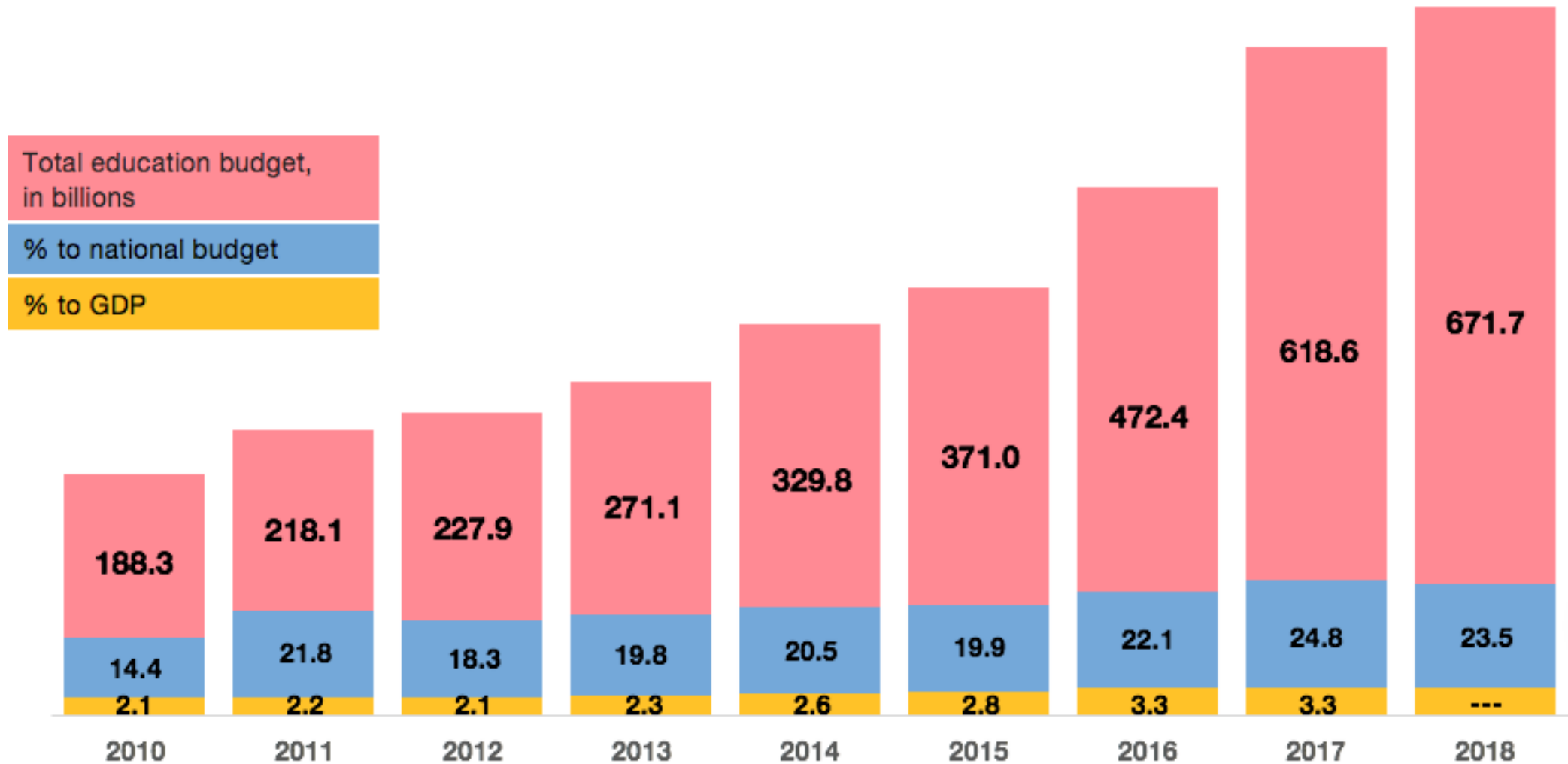
K to 12 system

Mother tongue based learning

National industry – academe council

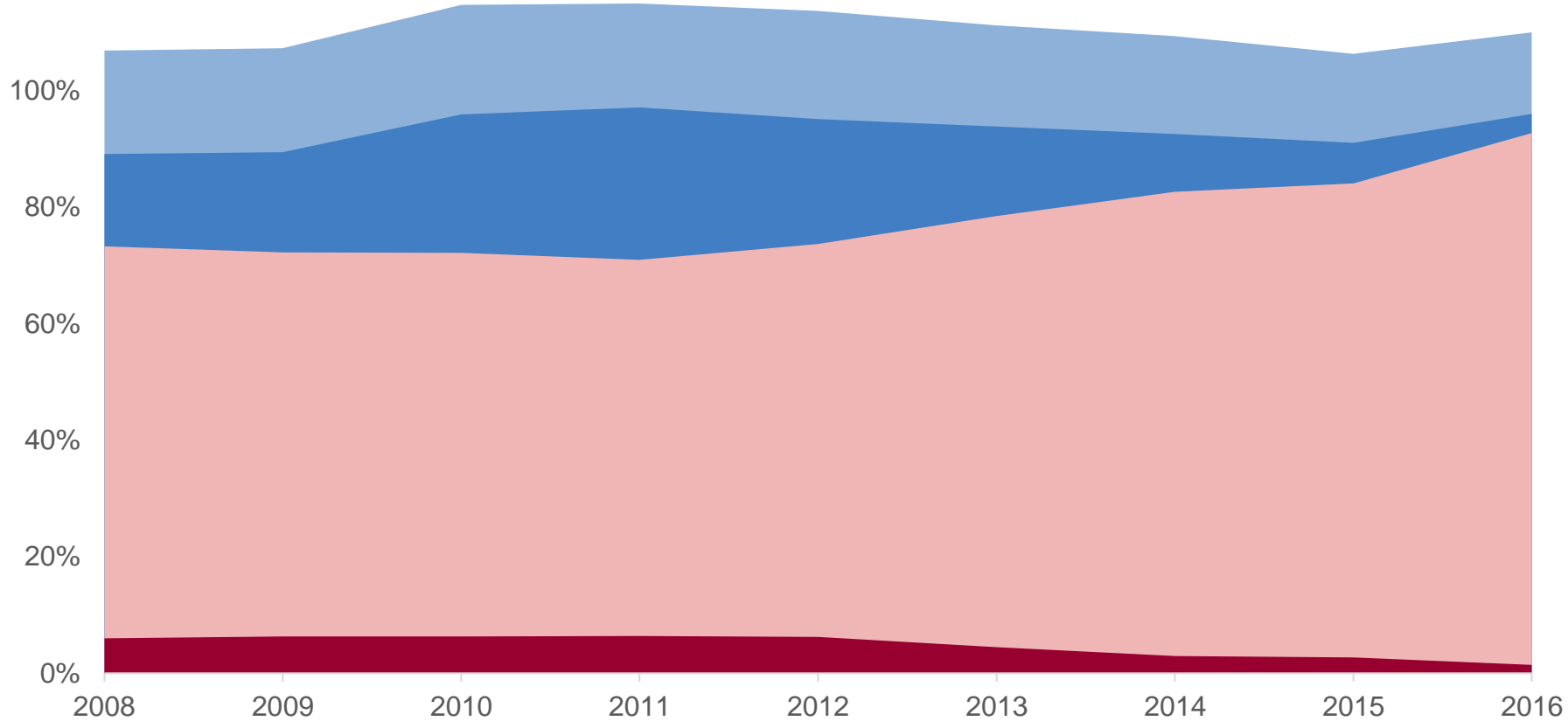
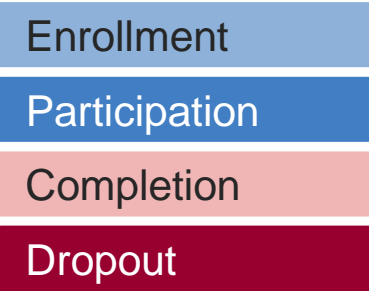
**More accessible post-secondary
education**

And expanded investments in education



More children now have access to school

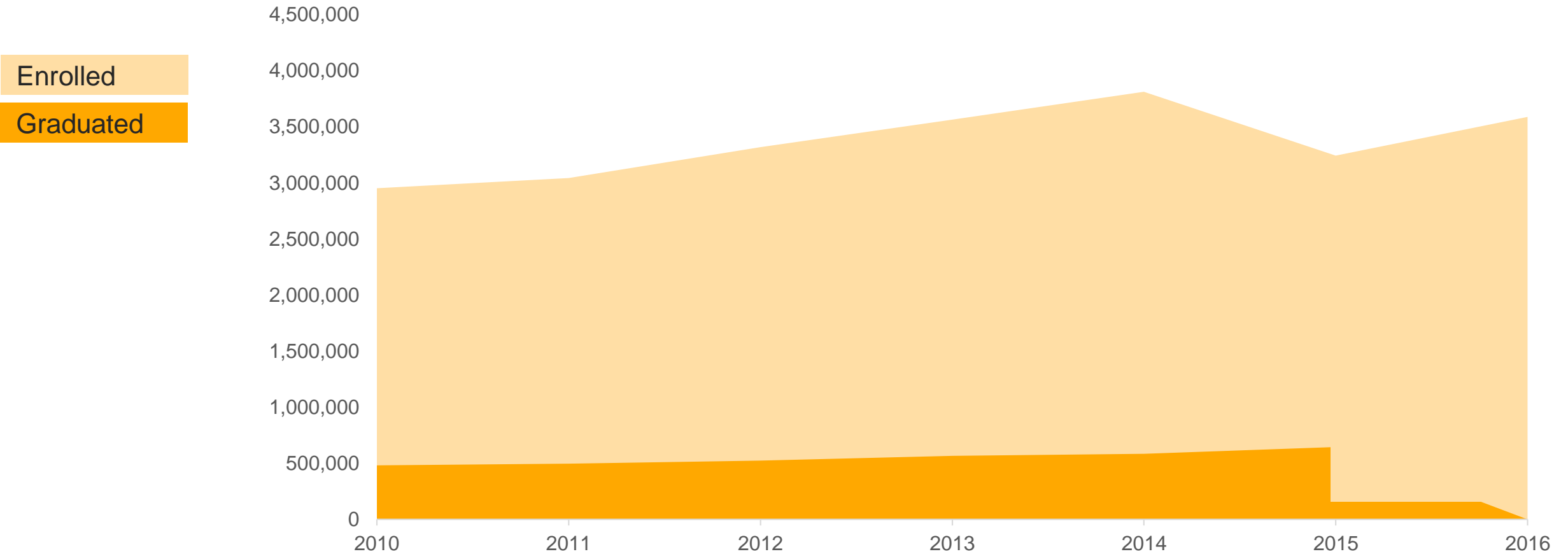
Basic education outputs, 2008-2016



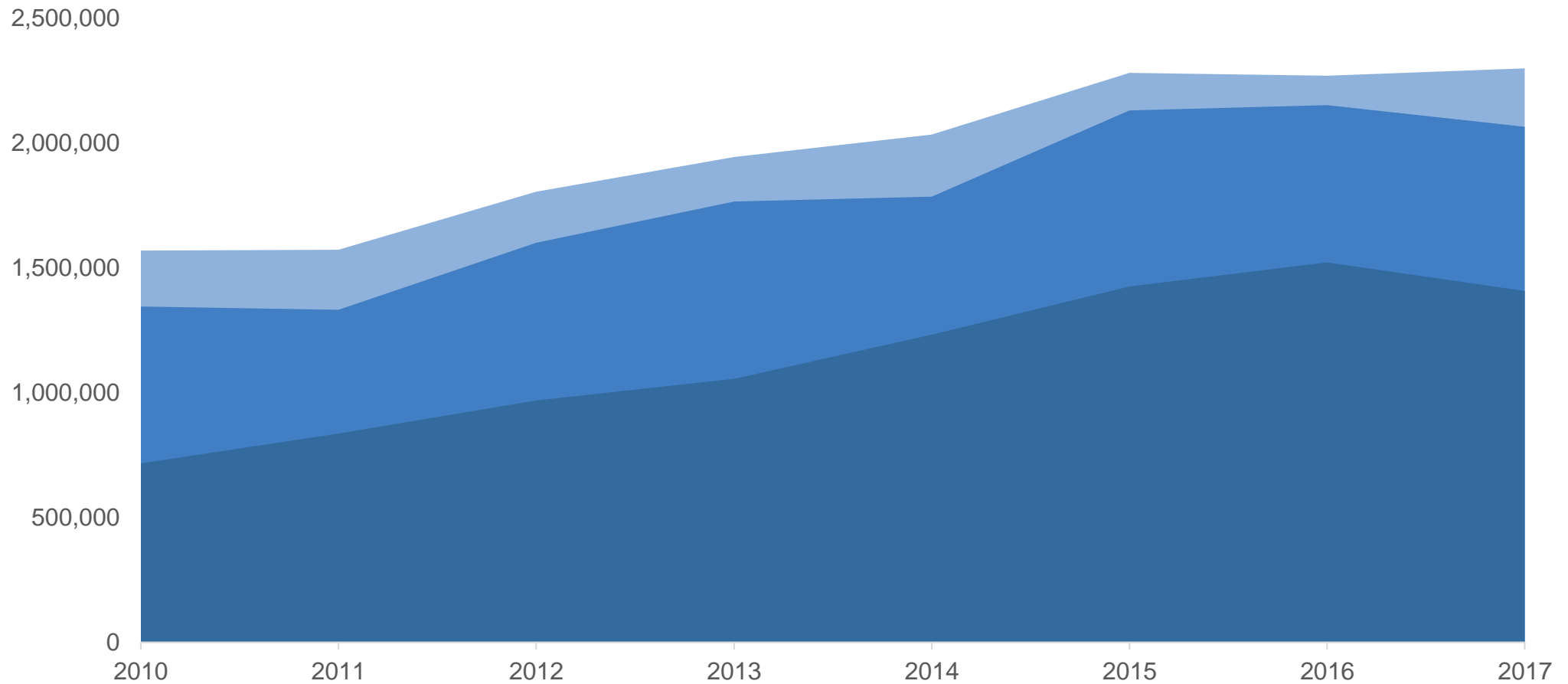
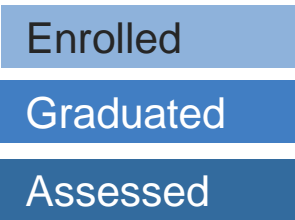
Participation
Enrolment for age group
corresponding to official school age

Many of them pursuing college

Higher education outputs, 2010-2016



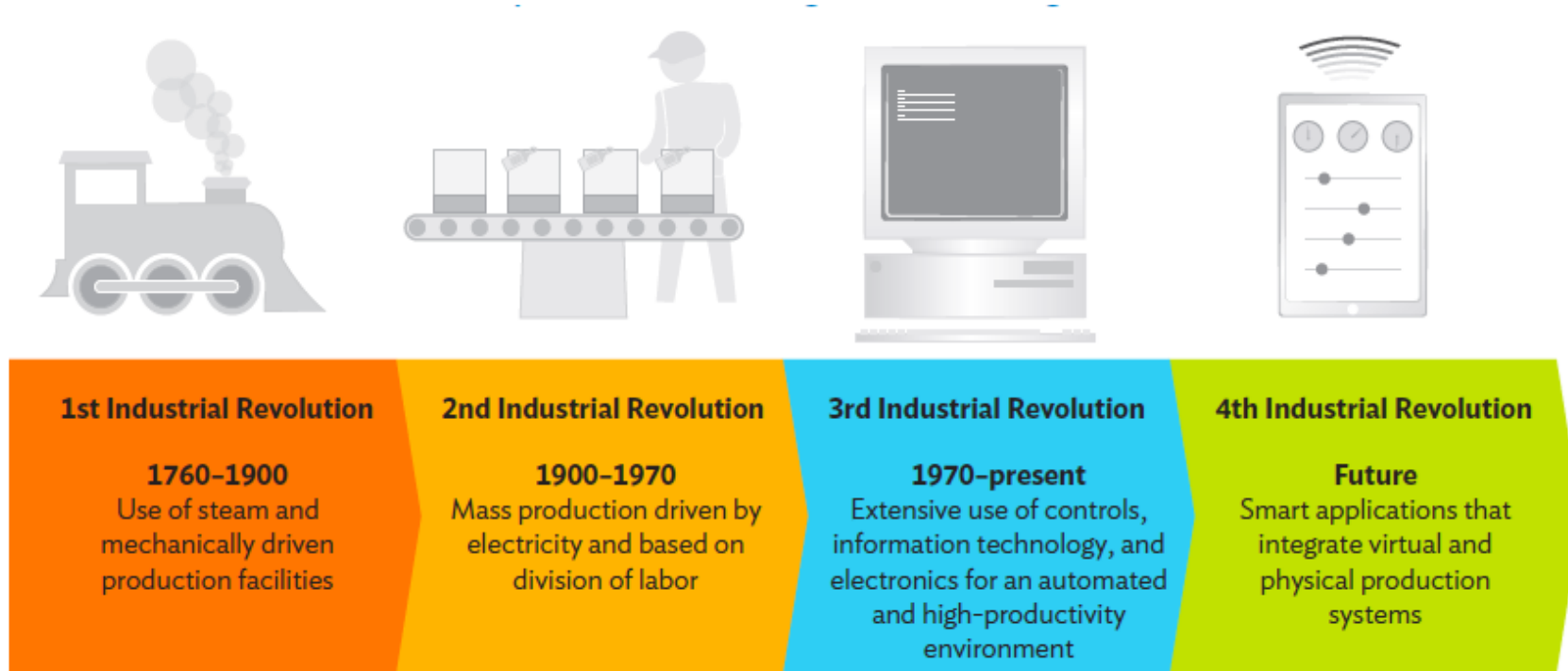
And tech-voc education



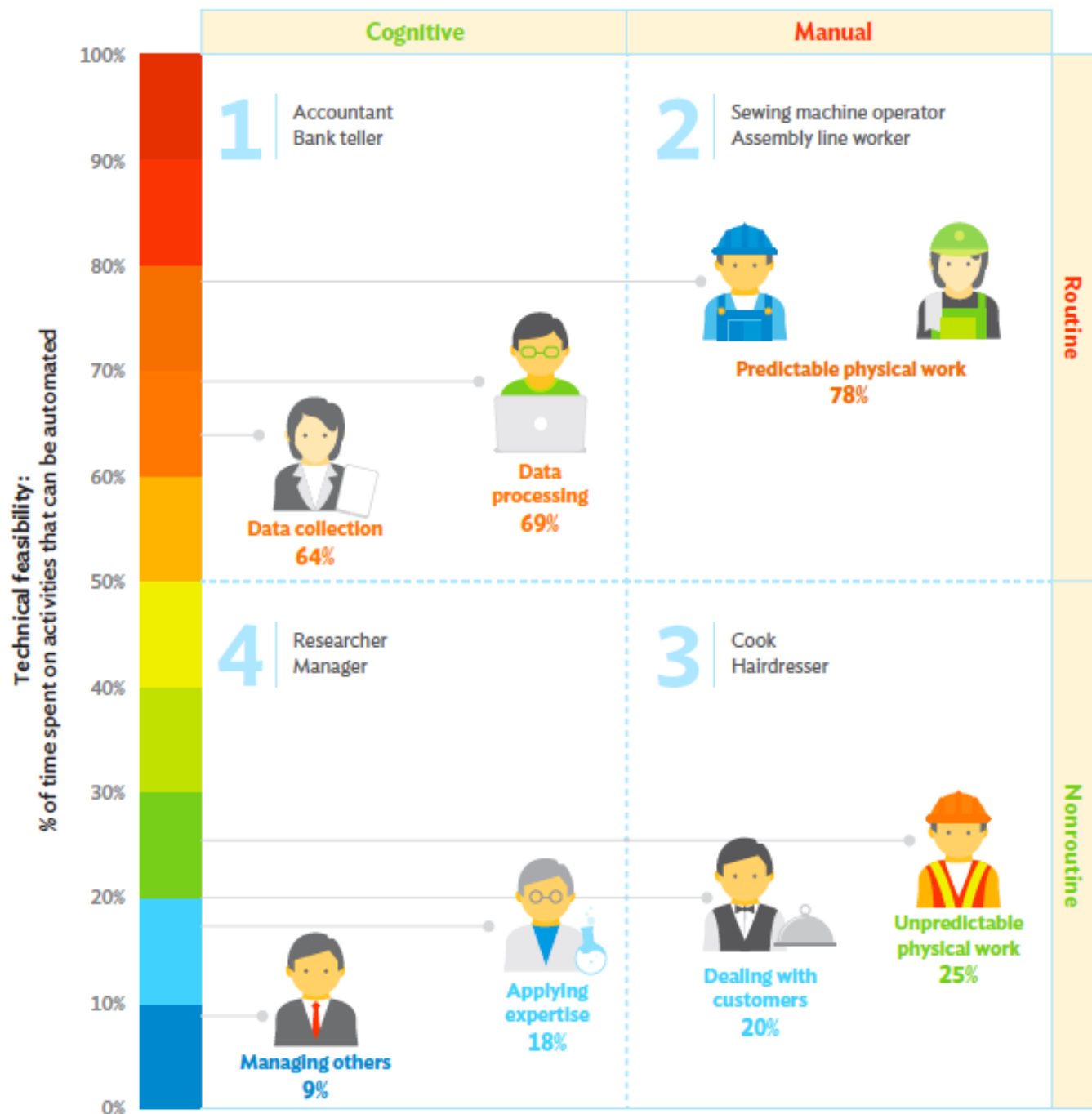
But we need to do more

**and teach skills that
are relevant and meaningful
to the workplace**

The 4th Industrial Revolution is upon us



According to the World Economic Forum 2016, there will be a net loss of **5 million** jobs in **15 major and emerging economies** by the year 2020 because of the Fourth Industrial Revolution.



Completely changing the world of work

Technological change and economic growth create new occupations and industries.

**Alignment can only happen
when data is available**

Labor market information

Labor and supply
demand

The local economy

Employment rates

Future labor trends

Information on jobs
and sectors

Skills and
qualifications

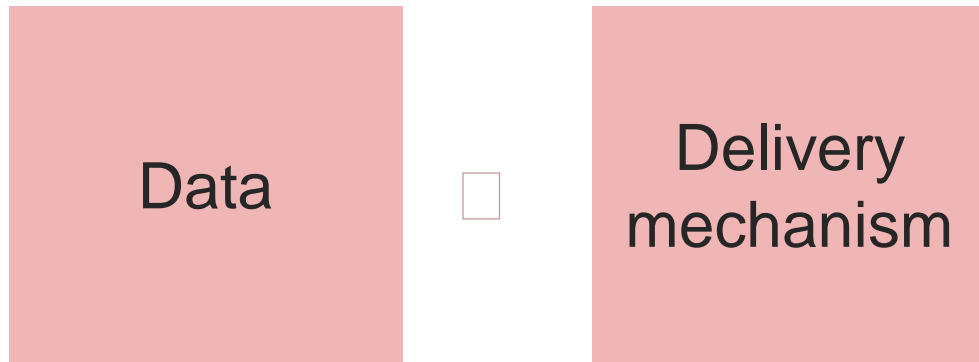
Information on
education and training

**Turning labor market information into
labor market intelligence**

Turning labor market information into labor market intelligence



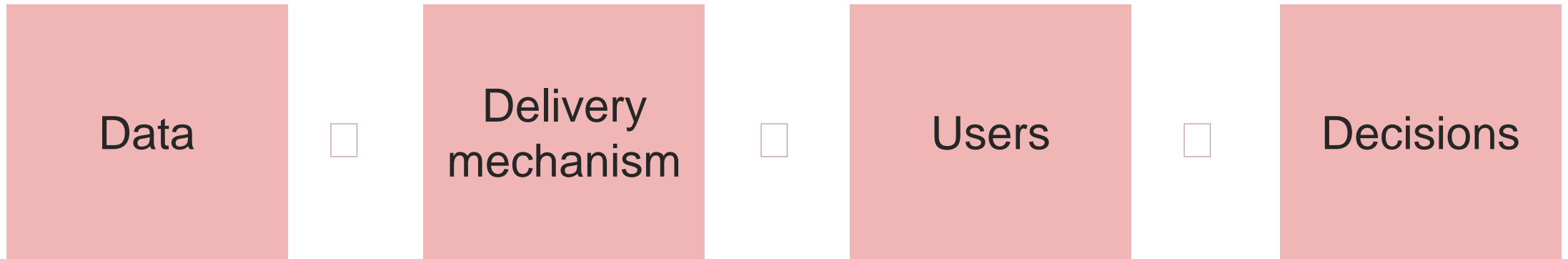
Turning labor market information into labor market intelligence



Turning labor market information into labor market intelligence



Turning labor market information into labor market intelligence



Align education and workforce training to industry needs

**Align education and workforce training
to industry needs**

**Inform career decisions of students
and workers**

**Align education and workforce training
to industry needs**

**Inform career decisions of students
and workers**

**Determine priority areas and
allocation of resources**

**Align education and workforce training
to industry needs**

**Inform career decisions of students
and workers**

**Determine priority areas and
allocation of resources**

**Determine effectiveness of
training and education programs**

Turning labor market information into labor market intelligence

- 1. Start small**
- 2. Begin at a regional and sectoral level**
- 3. Activate key players**
- 4. Create mechanisms for sustainability**
- 5. Make information more accessible to end users**



Thank you!

Justine Raagas
jbraagas@pbed.ph

